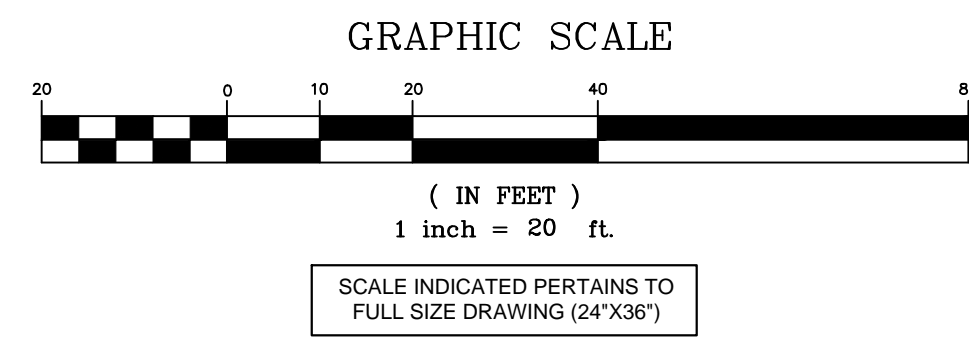
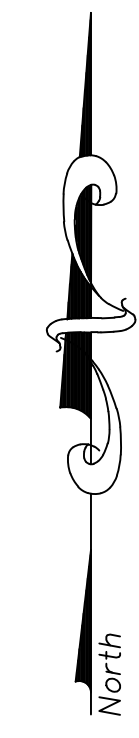
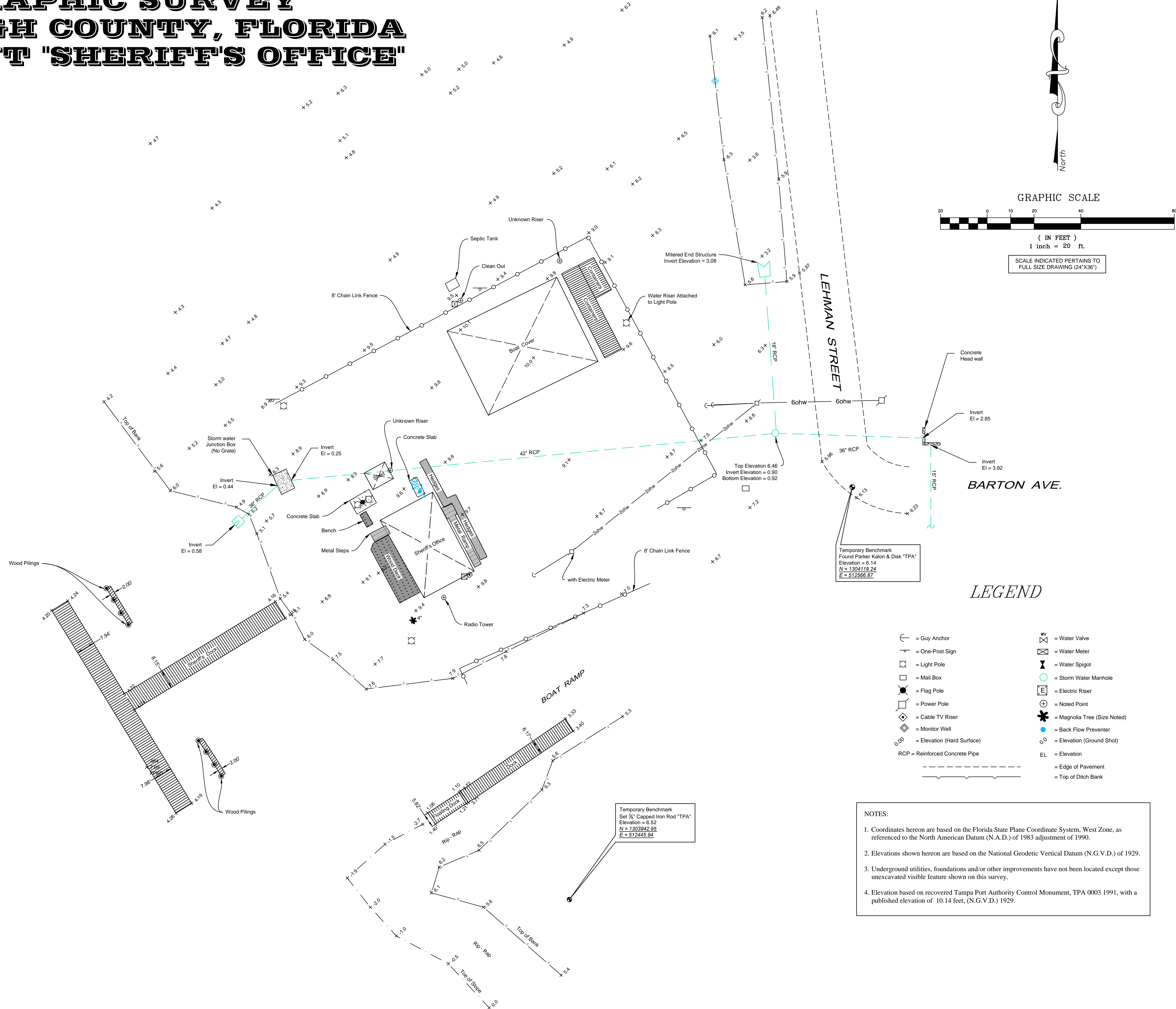


# TOPOGRAPHIC SURVEY HILLSBOROUGH COUNTY, FLORIDA HOOKER POINT "SHERIFF'S OFFICE"



### LEGEND

- = Guy Anchor
- = One-Post Sign
- = Light Pole
- = Mail Box
- = Flag Pole
- = Power Pole
- = Cable TV Riser
- = Monitor Well
- = Elevation (Hard Surface)
- = RCP = Reinforced Concrete Pipe
- = Water Valve
- = Water Meter
- = Water Spigot
- = Storm Water Manhole
- = Electric Riser
- = Noted Point
- = Magnolia Tree (Size Noted)
- = Back Flow Preventer
- = Elevation (Ground Shot)
- = Elevation
- = Edge of Pavement
- = Top of Ditch Bank

NOTES:

- Coordinates hereon are based on the Florida State Plane Coordinate System, West Zone, as referenced to the North American Datum (N.A.D.) of 1983 adjustment of 1990.
- Elevations shown hereon are based on the National Geodetic Vertical Datum (N.G.V.D.) of 1929.
- Underground utilities, foundations and/or other improvements have not been located except those unexcavated visible feature shown on this survey.
- Elevation based on recovered Tampa Port Authority Control Monument, TPA 0003 1991, with a published elevation of 10.14 feet, (N.G.V.D.) 1929.

CHANNEL "CUT D"

GEORGE S. STANNORE  
Florida Professional Land Surveyor No. 4868  
Port Surveyor  
Not valid without the signature and the original raised seal of a Florida licensed surveyor and mapper. Additions or deletions to survey maps or reports by other than the signing party is prohibited without written consent of the signing party.



FIELD BOOK USED:  
Book # 50  
Page # 20 - 22  
DATA FILE:  
CADD REFERENCE NOTES:

REV. REV. REV. PREPARED FOR: Patrick Blair  
Tampa Port Authority,  
Engineering Department

SURVEY CREW: \*\*\*  
CHANCEY & THOMPSON  
November 28, 2012  
DATE: Drawn By: Fernando Avellar

TOPOGRAPHIC SURVEY AT SHERIFF'S SITE			
CHECKED BY: GS	JOB NO. 00613	FILE NO.	XREF NONE
SCALE 1" = 20'			
SHEET NO. 1 OF 1			